

1.2 DC06 DRAG CLAMP



The Thomson Drag Clamp has a unique cam action rail gripping system which tightens its grip on the rail the harder you pull.

Massive, all-steel construction ensures that the Thomson Drag Clamp is tough enough for the job.

Large bearing areas and soft surfaces where the drag clamp grips the rail prevent damage to the rail in use.

The cam surfaces can be rotated six times to give a very long life indeed.



FEATURES

- Lightweight & Compact
- Cam Mechanism
- Can be supplied with chain
- High Strength
- All Steel Construction
- High Resistance to Dynamic Loads
- High Resistance to Abuse
- Proven in Use Since 2007
- 10,000 kg Max. Tow Load
- Fits CEN60 and BS113 Rail
- Full Factory Parts Backup
- CE Marked

A ROBUST, EASY TO USE DRAG CLAMP, SMALL ENOUGH TO FIT THE TOOLBOX OF MOST RRV's

SPECIFICATIONS

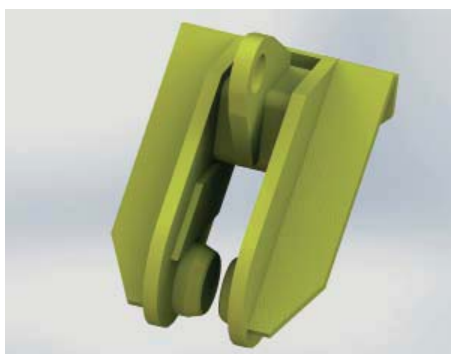
Weight	45 kg
Rated Pull	10,000 kgf
Proof Load (Factory test)	20,000 kgf
Mechanism	Cam type
Construction	Rigid All Steel
Body Colour	08E51 Yellow

OPTIONS

Can be supplied with tow chain and / or shear link

DOCUMENTATION

Operator's Manual
Parts Manual
Maintenance Plan
Factory Test Certificate



BENEFITS

- Cam mechanism means no linkage to jam
- Secure grip on rail
- No moving parts to jam or fail

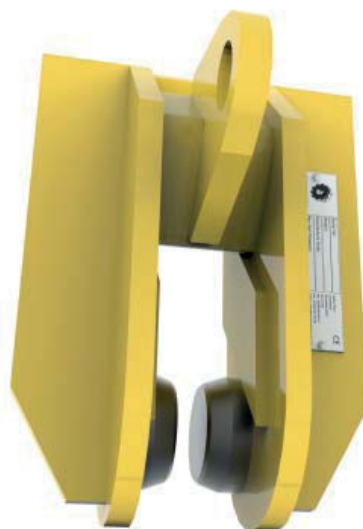


Specifications given may be subject to change due to our policy of continuous improvement

OPTIONS AND ORDERING INFORMATION

The DC06 Drag Clamp is available with or without a tow chain.

This device is suitable for BS113 and GEN60 flat bottom rails.



PRODUCT ACCEPTANCE

In 2006 when this product came onto the market Product Acceptance was not required for 'loose lifting and handling equipment'. No Product Acceptance application has been made for this product.

Example: DC06-01 Drag Clamp only

MODEL NUMBERS FOR ORDERING

When ordering a DC06 Drag Clamp please use the ordering code below:

DC06-□□

Beam Type	Code
<i>Drag Clamp Only</i>	01
<i>With Tow Chain</i>	02
<i>With Tow Chain & Shear Link</i>	03