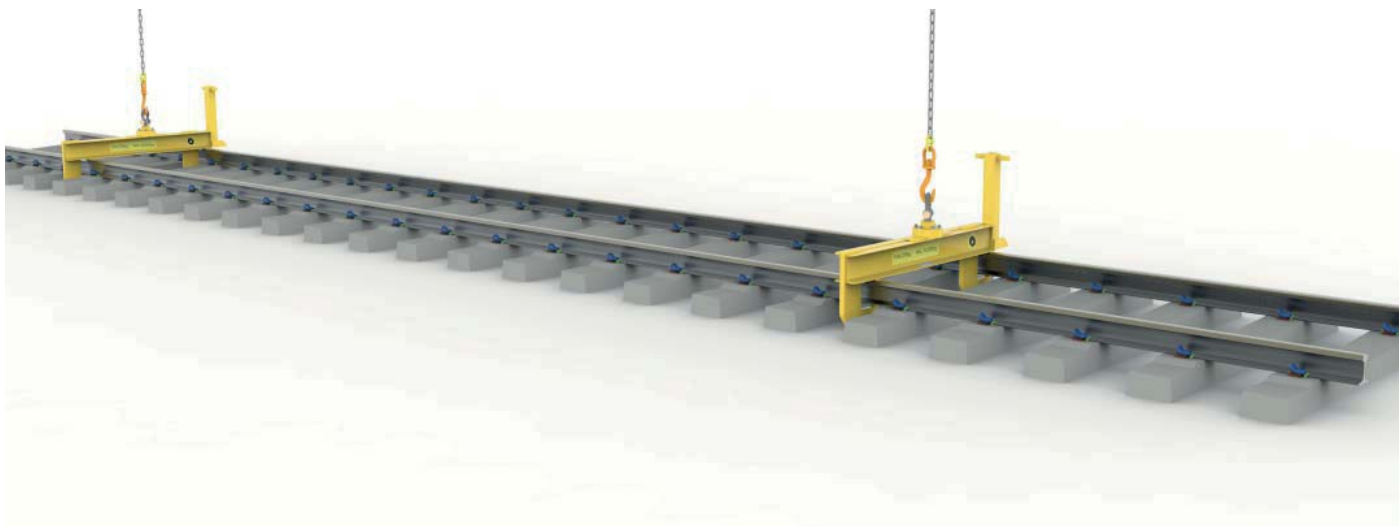


3.8 HLB13 PANEL LIFTING HOOK BEAM



For tandem lifting of track panels with cranes which do not have a hydraulic service available the hook beam is the solution.

Each beam has a safe working load of 10 tonnes and is fitted with a swivel head and shackle for attaching to the crane hook.

The narrow hooks can be made to penetrate the ballast by using the handle to 'saw' the beam.

When used to load track panels onto a train or lorry they can eliminate the need for a man to climb onto the load to disconnect chains.



FEATURES

- Strong and Robust
- All Steel Welded Construction
- High Resistance to Dynamic Loads
- High Resistance to Abuse
- Proven in Use Since 2008
- 10,000 kg WLL
- 20,000 kg Proof Load
- Full Factory Parts Backup
- CE Marked

A LOW COST, HEAVY-DUTY PANEL LIFTING SOLUTION

SPECIFICATIONS

Weight (typical)	235 kg
WLL (Safe Working Load)	10,000 kg
Proof Load (Factory test)	20,000 kg

Body Colour 08E51 Yellow

DOCUMENTATION

Operator's Manual
Parts Manual
Maintenance Plan
LOLER Test Certificate
PADS No. 094/013701



BENEFITS

- Low cost solution to panel handling
- Eliminates working at height
- No hydraulic supply required



OPTIONS AND ORDERING INFORMATION

The HLB13 Panel Lifting Hook Beam is available for standard, broad and narrow gauge track panels.

A transport / storage stillage is available for this product.



Example: HLB13-01 Hook Lifting Beam for standard gauge track panels

PRODUCT ACCEPTANCE

This product has full Network Rail Product Acceptance under Certificate number 05/06016

MODEL NUMBERS FOR ORDERING

When ordering this product please use the ordering code below to specify the correct options

HLB13-□□

Beam Type	Code
Standard Gauge	01
1000mm Narrow Gauge	02
1600mm Broad Gauge	03